

## VISION, MISSION & CORE VALUES

### VISION:

To provide Health Care to the Community of Oyaya and its surroundings in DC28.

### MISSION:

We are committed to provide a coordinated, integrated, sustainable and accessible health services at Oyaya and its surroundings in DC28 within the available resources working in partnership with other stakeholders in order to meet their needs based on PHC approach within the District Health System

### CORE VALUES:

- ◆ Trust built on honest, mutual understanding and good human relations
- ◆ Dedication to perform and sustain high standards of service excellence
- ◆ Openness and transparency
- ◆ Respect
- ◆ Courage to learn and innovate



**health**

Department:  
Health  
PROVINCE OF KWAZULU-NATAL

**MBONGOLWANE  
DISTRICT  
HOSPITAL**

TEL : 035 4766242/ 80

FAX: 0354766380/ 035

Email: [siphamandla.buthelezi@kznhealth.gov.za](mailto:siphamandla.buthelezi@kznhealth.gov.za)  
[www.kznhealth.gov.za/mbongolwane\\_hospital.htm](http://www.kznhealth.gov.za/mbongolwane_hospital.htm)

DESIGNED BY : PUBLIC RELATIONS OFFICE

## MBONGOLWANE DISTRICT HOSPITAL



**health**

Department:  
Health  
PROVINCE OF KWAZULU-NATAL

**MBONGOLWANE DISTRICT  
HOSPITAL**

**PRIVATE BAG X 126**

**Kwa-Pett**

**ESHOWE**

**3820**

## SERVICE PROVIDED

- ◆ Primary Health Care Services :
  - 5 Clinics
  - 2 Mobile clinics
  - School health
  - TB
- ◆ OPD
- ◆ Mental health services
- ◆ Maternal, child & women's Health Programme
- ◆ Rehabilitative Programme
- ◆ HIV & AIDS, PMTCT & ART Programmes
- ◆ Health promotion programme
- ◆ Communicable Disease Control
- ◆ Chronic Disease & Geriatrics
- ◆ Surgical & Medical Services
- ◆ Nursing Training (2 year programme)
- ◆ Ophthalmic Service
- ◆ Social Welfare Service
- ◆ Laboratory services
- ◆ Pharmaceutical services
- ◆ Radiology
- ◆ Crisis Centre
- ◆ Male Medical Circumcision
- ◆ Emergency services
- ◆ Eye clinic

## VISITING HOURS

### Monday—Friday

Morning : 10 am – 12 am

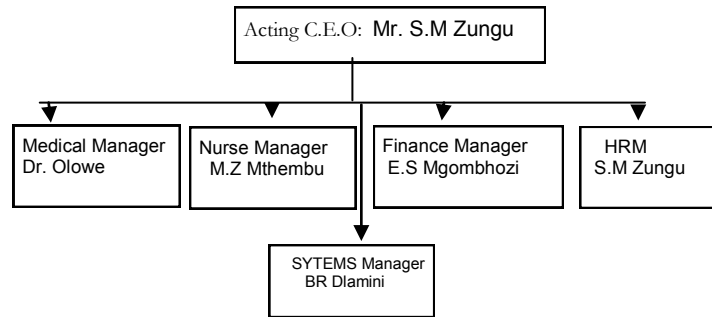
Evening : 13 pm –17 pm

### Saturday , Sunday & public holidays

Morning : 10am-12am

Evening : 13pm-18pm

## HOSPITAL MANAGEMENT



## SPECIAL CLINIC VISITS

T.B Clinic : 07 H30-16H00

HIV/AIDS Clinic: 07H30-16H00

EYE Clinic: 07h30-16h00

PMTCT: 7H30-16H00

ANC (antenatal) : 7H30-16H00

WELL BABY Clinic (PMTCT): 07H30-16H00

POSTNATAL CARE: 07H30-16H00

## HEALTH DELIVERY PACKAGE

Mbongolwane District Hospital provides a comprehensive, integrated & sustainable health services based on the primary health care approach.

Total population serviced : +-65.000

## ADMISSION PROCEDURE

- ◆ Admission will be conducted by the admitting officer who will record your personal details & ask for the hospital fees.
  - ◆ If you have no money or too sick, you can pay before the discharge date.
  - ◆ In the ward nurses will also ask for some personal details. Nurses will be available to meet your needs.
- NB:** Alcohol and drugs are strictly forbidden. Be free to express yourself in your own language. Your cultural and religious beliefs will be respected. Please respect the hospital property.

## IMPOTANT THINGS TO BRING WHEN GOING FOR ADMISSION

- ◆ Toiletries
- ◆ ID book
- ◆ Pension card
- ◆ Medical Aid card
- ◆ Contact numbers of the next of kin

## BASIC FEES

HO—Free (in /Outpatient) (social pensioners & formally unemployed )  
 H1—R40.00 (Out patient)  
 H2—R65.00 (Out patient)  
 R60.00 (admission fee)  
 PHP/PP— Tariffs applied according to the treatment.  
 Patients on Medical Aid are charged as per UPFS.  
 Fees are prescribed by the Dept. of Health and are subject to change.